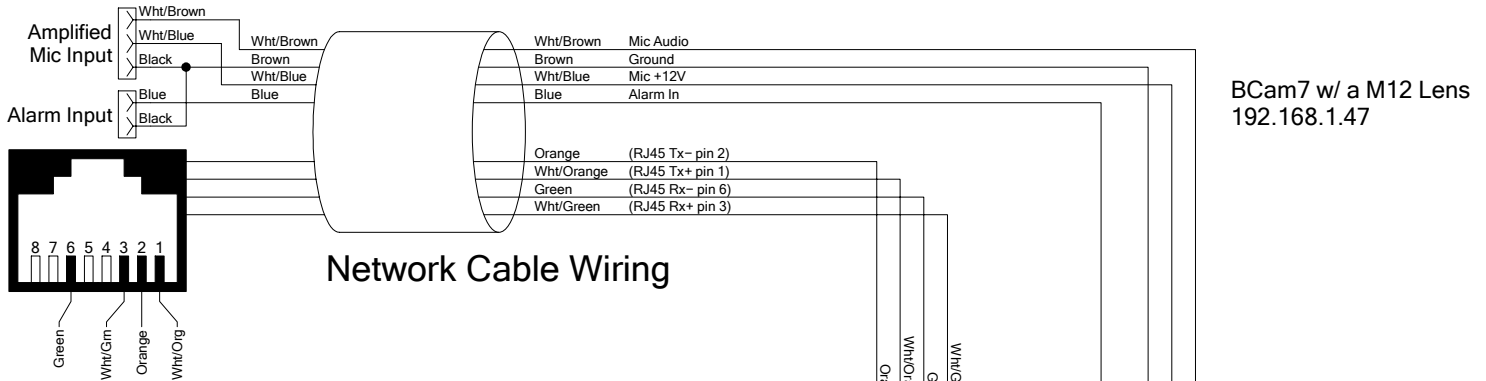


BCam7 - BLK18E-0225-38X38_S 54H13PE-S Board Mod's

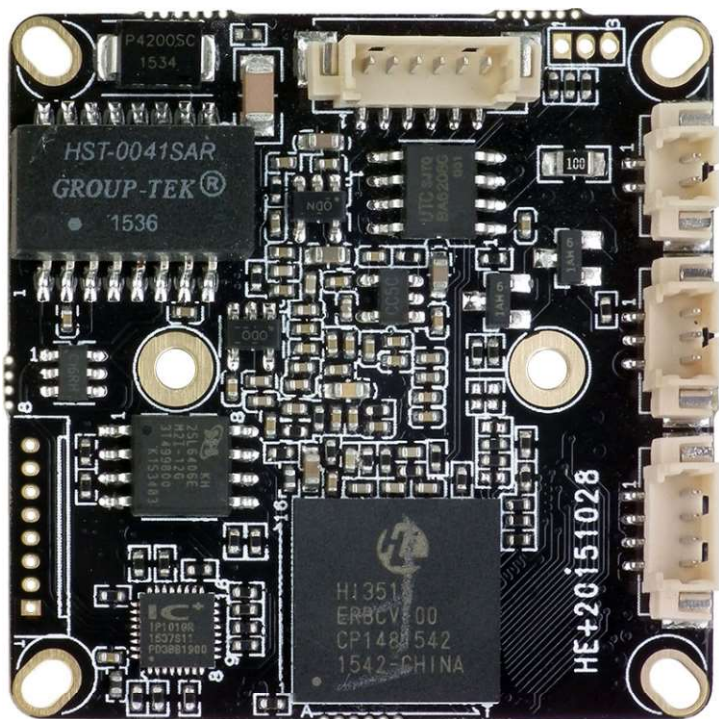
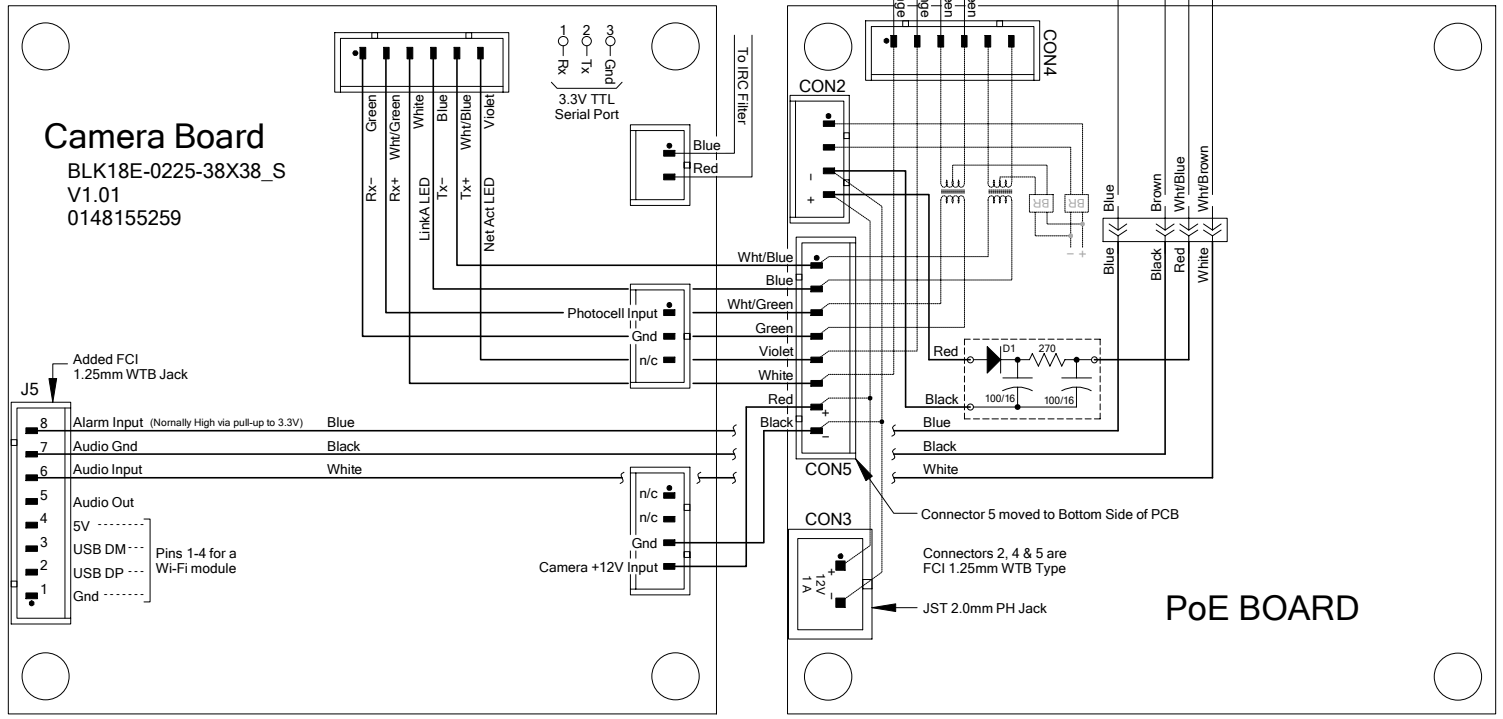
1280x960 - 1/3" SONY Exmor IMX225 Sensor

(0.0001 LUX)

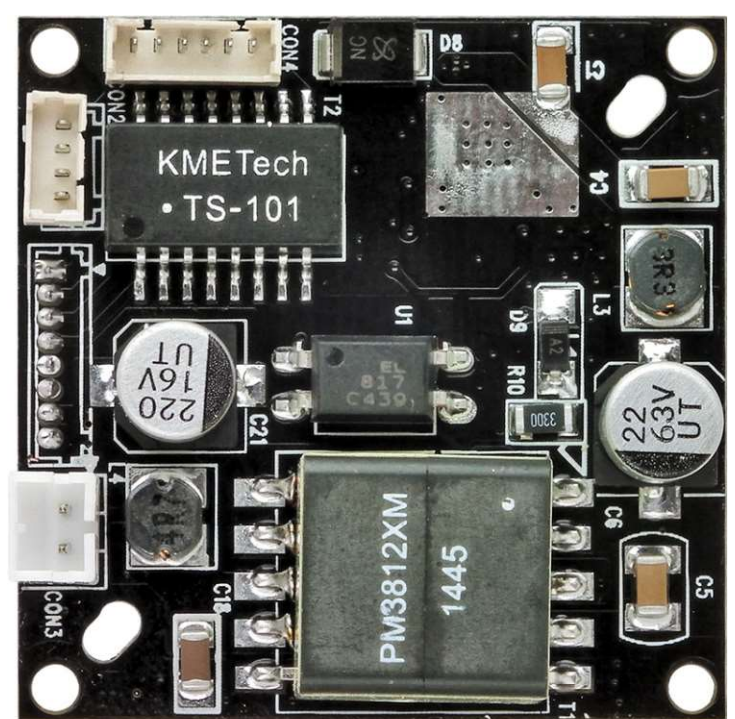
Sept 26 / 2016



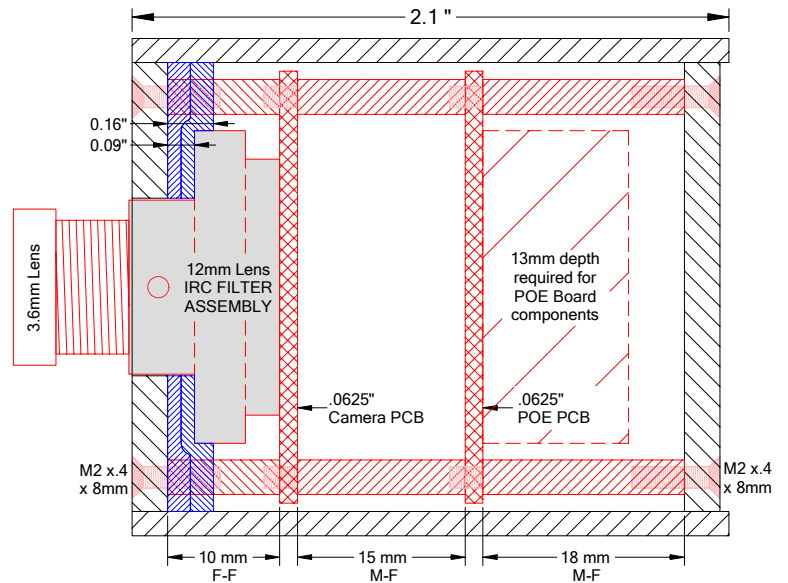
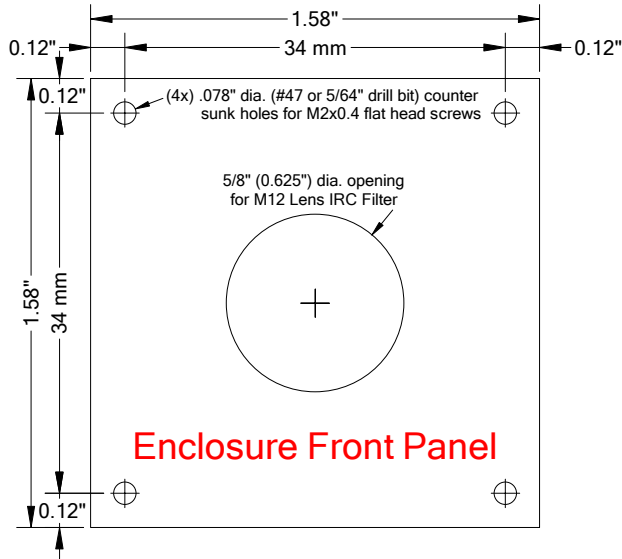
BCam7 w/ a M12 Lens
192.168.1.47



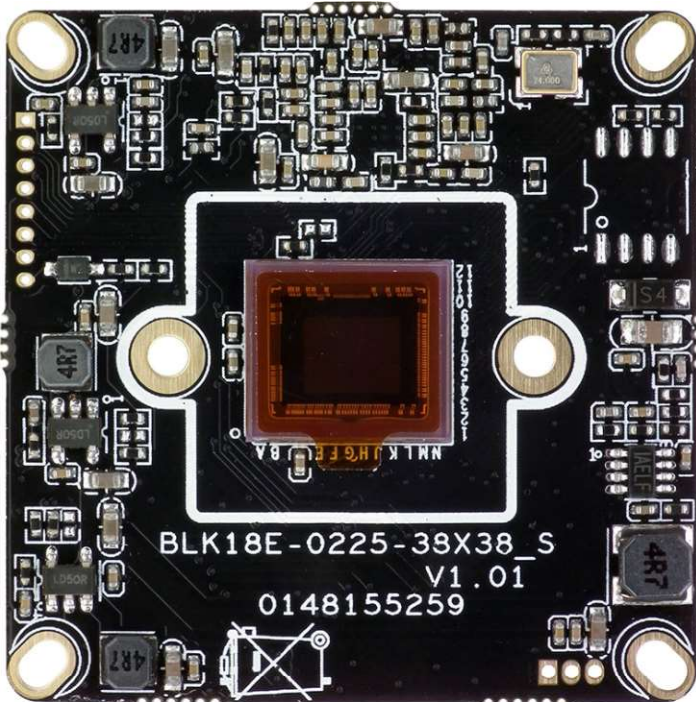
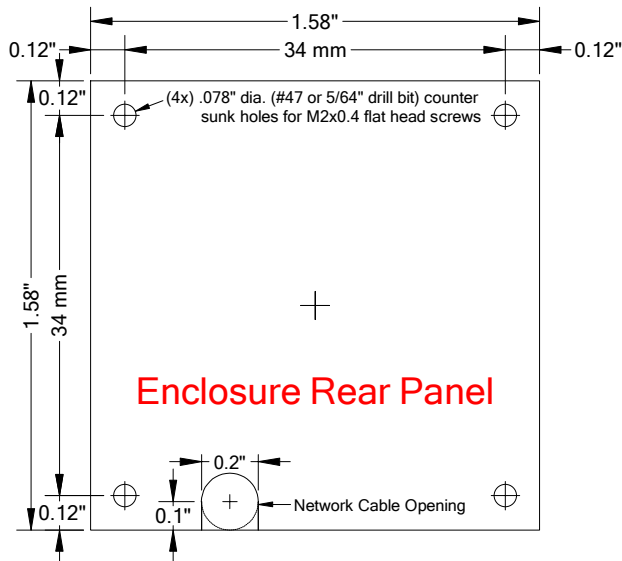
CAMERA BOARD



POE BOARD



(1) Enclosure Used for BCam7



CAMERA BOARD SENSOR SIDE